

# THE ROYAL ISLE OF WIGHT **COUNTY SHOW**

## EQUINE SHOWING, SHOW JUMPING, INTER TEAM RELAY AND ARENA EVENTING SCHEDULE

Saturday 12<sup>th</sup> July and Sunday, 13<sup>th</sup> July 2025  
at  
County Showground  
Northwood  
Isle of Wight PO31 5TP

THE EQUINE AREA IS KINDLY SPONSORED BY



THE EQUINE RING ONE IS KINDLY SPONSORED BY



**“SUPREME OF THE SHOW”**

**CHAMPION £250, RESERVE CHAMPION £150**

**KINDLY SPONSORED BY THE CASTLE INN**

Affiliated to  
Sunshine Tours



HEADLINE SPONSORS OF THE ROYAL ISLE OF WIGHT COUNTY SHOW 2025

**CLOSING DATE FOR ALL ENTRIES MONDAY, 30<sup>th</sup> JUNE**  
**(Inter Team Relay MONDAY, 16<sup>th</sup> JUNE)**

## **GENERAL CONDITIONS**

1. Entry fees for all classes: **MEMBERS £15, NON-MEMBERS £18. Inter Team Relay £20 per Team**
2. **SHOWING PRIZE MONEY 2025**  
Each Class £20, £10 & £5  
Each Champion £20 & rosette, Each Reserve Champion £10 & rosette  
**“SUPREME OF THE SHOW” CHAMPION £250, RESERVE CHAMPION £150**  
**This Championship is kindly sponsored by THE CASTLE INN**
3. The Show Committee and the Landowners accept no liability for any occurrence on the Showground. Competitors and their supporters and friends are required to have regard for the Health and Safety of others. The onus is on every rider who suffers a fall or anybody who suffers an injury whilst on the Showground, to report the fall/injury to the Show Secretary.
4. First Aid cover will be available on the Showground. Vectis Equine Vets (01983 533799) will be on direct call.
5. No exhibitor may enter or show a horse/pony under a judge who is known to have bred, sold, produced or received financial gain for that horse/pony. (Stud fees are exempt from financial gain).
6. No person who has a conviction or pending conviction for animal cruelty will be permitted to compete or attend.
7. Instructions from the Safety Officer are to be followed at all times. Failure to do so will result in dismissal from the Showground. **HORSES MUST STAY WITHIN DESIGNATED AREAS**
8. Correctly secured Skull Caps/Riding Hats Nos. PAS015 2011, VG1, (BS) EN1384 2023, ASTM F1163 2015 and 2023, SNELL E2016 and E2021, AS/NZS 3838 2006, **MUST** be worn by riders at all times when mounted on the Showground.
9. People leading ponies in Leading Rein classes **must** be **sixteen years old or over**.
10. Handlers 14 years & under competing the in-hand classes are required to wear a hard hat as above.
11. **STALLIONS** – Appropriate stallion bridle discs must be worn
12. Riders, handlers and their grooms must, at all times, present themselves in the show ring correctly, neatly and smartly dressed. All Grooms must wear a head covering/hat whilst in the Show Ring.
13. **HORSES/PONIES ARE NOT PERMITTED IN PUBLIC AREAS.**
14. Horses tied to boxes **MUST NOT** be left unattended.
15. All rubbish must be removed and Horseboxes and Trailers must not be cleaned out on the Showground. Please clear hay debris, droppings, etc from around your box/trailer.
16. Admission passes will be allocated as follows: 1 horse entered – 3 wristband passes / 2 horses entered – 4 wristband passes / 3 horses entered – 5 wristband passes. Thereafter 1 wristband pass per horse up to a maximum of 6 wristband passes. **This allocation is only intended to relate to those preparing, handling or riding animals.** Admission tickets for additional guests may be purchased at the public entrance gate. **Passes & numbers will be available to collect from The County Show Office between 9am to 5pm Thursday 3<sup>rd</sup> July to Tuesday 8<sup>th</sup> July and evenings 5 to 7pm 3<sup>rd</sup> and 8<sup>th</sup> July only.**
17. **Mainland Entries** Please contact the Office in advance for travel arrangements and/or stabling requirements and be prepared to book early on the ferries. Wightlink (0871 3761000) [www.wightlink.co.uk](http://www.wightlink.co.uk) or Red Funnel (0844 844 9988) [www.redfunnel.co.uk](http://www.redfunnel.co.uk). Lorries/trailers should be booked via freight services.
18. Certain cups and trophies must remain with the Society - therefore competitors who win a cup may be presented with a replacement trophy. Cup winners are responsible for insuring cups whilst in their possession and for returning them in the condition that they were awarded in.
19. Dogs are to be kept on leads at all times.

**\*\*PLEASE NOTE: ALL Entries MUST be made via Horse Monkey only with the exception of Inter Team Relay and Carriage Driving (see schedule for details for those entries)**

**\*\*No entry will be accepted without the appropriate fee AND £4 per rider/handler for First Aid cover**

**Closing date for TEAM entries is Monday 16<sup>th</sup> June. ALL other entries close Monday 30<sup>th</sup> June. **NO ENTRIES WILL BE ACCEPTED AFTER THAT DATE.****

**THERE CAN BE NO SUBSTITUTIONS AND NO RETURN OF FEES AFTER THE CLOSING DATE UNLESS A VET'S OR DOCTOR'S CERTIFICATE IS PRODUCED.**

**ALL CUPS MUST BE RETURNED TO THE COUNTY SHOW OFFICE, SHIDE MEADOWS CENTRE, SHIDE ROAD, NEWPORT, PO30 1HR [Entrance by National Tyre Centre] BEFORE MONDAY, 16<sup>th</sup> JUNE 2025.**

**HORSE PASSPORTS MUST BE AVAILABLE FOR INSPECTION BY TRADING STANDARDS / DEFRA AT THE SHOW**

~~~~~  
**Qualifications/Specific Rules – Sunshine Tours**

**This show is a qualifier for The Sunshine Tour Championships held at The All-England Showground, Hickstead from Thursday 11<sup>th</sup> – Sunday 14<sup>th</sup> September 2025. The Championships are for unaffiliated and amateur competitors in **Dressage** from Intro to Elementary, **Show Jumping** from Lead Rein to 1.05m; **Showing** for lead rein, in-hand, ridden, working hunter, veterans, plus many more, **Eventer's Challenge** from 50cm through to 90cm.**

**Qualification: Dressage & Show Jumping 1<sup>st</sup> – 3<sup>rd</sup> place; Showing & Eventers Challenge 1<sup>st</sup> – 4<sup>th</sup> place. Qualification does not pass down the line.**

**Visit [www.sunshinetour.co.uk](http://www.sunshinetour.co.uk) for more information, to register and submit evidence of results.**

Registration must be completed within 1 month of qualification (sooner for late July shows). Restrictions apply to horse and competitor's previous winnings and amateur status, please check the website [www.sunshinetour.co.uk](http://www.sunshinetour.co.uk) for Terms & Conditions.

# Saturday, 12<sup>th</sup> July 2025

## SPENCE WILLARD RING

### (Ring One A & B - Middle Ring)

**PLEASE NOTE: The ring will be split A & B and the following classes will run concurrently**  
(to start at 10.00.a.m in the left hand section of the ring - 1A) Judge – Mrs D. Barr

#### **CLASS 1 OPEN LEADING REIN**

- Open to any breed, mares and geldings four years old and over not exceeding 122 cms.  
**M&M Ponies may be shown unplaited.**
- Rider must be at least 3 years old on the day of the class and not to have attained their 9th birthday by the 1st January in the current year
- Ponies must be shown in a snaffle bit, the leading rein must be attached to the noseband only and the reins must go directly from the bit to the child's hands. People leading ponies in leading rein classes must be 16 years old or over,
- Competitors in this class may not ride in another class on the same pony off the lead

The **EMMA POUND PERPETUAL CHALLENGE CUP** will be awarded to the winning pony in this class  
The **MEW LANGTON PERPETUAL CHALLENGE CUP** will be awarded to the best rider in this class  
**THIS CLASS IS KINDLY SPONSORED BY: WATERTIGHT PUMBING SOLUTIONS**

#### **CLASS 2 OPEN FIRST RIDDEN**

- Open to any breed, mares and geldings four years old and over not exceeding 128cms.  
**M&M Ponies may be shown unplaited.**
- Rider not to have attained their 12th birthday by 1st January in the current year
- Ponies must not be cantered except in their individual show.
- Ponies may be shown in any suitable bridle

The **KNIGHTON JUST SO PLATE** will be awarded to the winning pony in this class  
The **IAN MOREY PERPETUAL CHALLENGE CUP** will be awarded to the best rider in this class  
**THIS CLASS IS KINDLY SPONSORED BY: SOUTHYEW PONIES**

#### **MINI CHAMPIONSHIP**

The **SCARBOROUGH MEMORIAL CHALLENGE TROPHY** presented by **Fairfields Farm** will be awarded to the winner of the Mini Championship  
Open to 1<sup>st</sup> and 2<sup>nd</sup> prize winners from classes 1 & 2

**THIS CHAMPIONSHIP IS KINDLY SPONSORED BY: THE ISLAND JAM COMPANY**

#### **MOUNTAIN AND MOORLAND PONIES**

Judge – Mrs D. Barr

Open to Mountain and Moorland ponies registered with their respective Pure-Bred societies of Connemara, Dales, Dartmoor, Exmoor, Fell, Highland, New Forest, Shetland, Welsh A, B, C and D. Stallion, mare, gelding, colt and filly. Rider any age.

The **Welsh Perpetual Challenge Cup** (Y.Cwmpwn Cymnreig) presented by the IW Welsh Society will be awarded to the best Welsh Cob (sec D). The 2 highest placed cobs in Classes 3, 6 & 11. [Handlers to provide and wear a white armband.](#)

The **Bramshaw Penny Lane Trophy** presented by Mrs. R. Edwards will be awarded to the winner of the In-Hand Mountain and Moorland Pony Championship

The **Cuckoo Memorial Trophy** presented by the late Mrs. J. Spurgin will be awarded to the winner of the Ridden Mountain and Moorland Championship

The **Vectis Stud Perpetual Challenge Cup** presented by Miss A.M. Reed will be awarded to the winner the Overall Mountain and Moorland Championship

## **STALLIONS**

Riders of small breeds must have attained their 12<sup>th</sup> birthday before 1<sup>st</sup> January in the current year

Riders of large breeds must have attained their 14<sup>th</sup> birthday before 1<sup>st</sup> January in the current year

*Appropriate stallion bridle discs must be worn*

**N.B. Hard hats to current British Standards must be worn by all handlers [General Condition 6] , however this is not a National Pony Society requirement with the exception of all children 14 years & under.**

## **MOUNTAIN & MOORLAND IN HAND**

### **CLASS 3 SMALL BREEDS YOUNGSTOCK**

Open to Dartmoor, Exmoor, Shetland, Welsh Sections A & B -1, 2 & 3 year olds.

***THIS CLASS IS KINDLY SPONSORED BY: HOUNDS TO HORSES***

### **CLASS 4 LARGE BREEDS YOUNGSTOCK**

Open to Connemara, Dales, Fells, Highland, New Forest, Welsh Sections C & D. 1, 2 & 3 year olds

***THIS CLASS IS KINDLY SPONSORED BY: TBC***

### **CLASS 5 SMALL BREEDS IN-HAND**

Open to Dartmoor, Exmoor, Shetland, Welsh Sections A & B 4 years old and over

***THIS CLASS IS KINDLY SPONSORED BY: SHALFLEET VILLAGE STORES***

### **CLASS 6 LARGE BREEDS IN-HAND**

Open to Connemara, Dales, Fells, Highland, New Forest, Welsh Sections C & D 4 years old and over

***THIS CLASS IS KINDLY SPONSORED BY: LANEND NEW FOREST PONIES***

### **M & M IN-HAND CHAMPIONSHIP**

1<sup>st</sup> & 2<sup>nd</sup> prize winners from Classes 3 to 6 inclusive

The **BRAMSHAW PENNY LANE TROPHY** presented by **Mrs R Edwards** will be awarded to the winner of this Championship.

***THIS CHAMPIONSHIP IS KINDLY SPONSORED BY: BLADERUNNER***

## **LUNCH BREAK**

### **MOUNTAIN & MOORLAND RIDDEN**

**Judge – Mrs D. Barr**

Open to Ridden Mountain & Moorland ponies registered with their respective Pure-Bred Societies – Stallion, mare, or gelding 4 years and over.

### **CLASS 7 MOUNTAIN & MOORLAND OPEN RIDDEN SMALL BREEDS**

Open to Shetland, Dartmoor, Exmoor, Welsh Sections A & B 5 years and over

***THIS CLASS IS KINDLY SPONSORED BY: CASTLE JEWELLERY***

### **CLASS 8 MOUNTAIN & MOORLAND OPEN RIDDEN LARGE BREEDS**

Open to Connemara, Dales, Fell, Highland, New Forest, Welsh Sections C & D 5 years old and over

***THIS CLASS IS KINDLY SPONSORED BY: JAMES COOK RURAL SERVICES***

### **M & M RIDDEN CHAMPIONSHIP**

1<sup>st</sup> & 2<sup>nd</sup> prize winners from Classes 7 & 8

The **CUCKOO MEMORIAL TROPHY** presented by the late **Mrs J. Spurgin** will be awarded in this championship

***THIS CHAMPIONSHIP IS KINDLY SPONSORED BY: KNIGHT TREE CARE***

**The WELSH PERPETUAL CHALLENGE CUP (Y.CWMPAN CYMNREIG)**

presented by the IW WELSH SOCIETY will be awarded to the best Welsh Cob (sec D).  
The 2 highest placed cobs in Classes 4, 6 & 8.

**OVERALL MOUNTAIN AND MOORLAND CHAMPIONSHIP**

Champion and Reserve from **M & M** In-Hand and Ridden Championships  
The **VECTIS STUD PERPETUAL CHALLENGE CUP** presented by **Miss A. Reed** to the winner.  
**THIS CHAMPIONSHIP IS KINDLY SPONSORED BY: THE ISLE OF WIGHT MOUNTAIN & MOORLAND PONY SOCIETY**

**(to start at 10.00.a.m in the right hand section of the ring - 1B) Judge – Miss J. Ryde-Rogers**

**CLASS 9 IN-HAND SHOW HUNTER PONY, SHOW PONY, PART-BRED M&M**

Open to mares and geldings, any breed, any age. **not exceeding 153cm [15hh]**

**THIS CLASS IS KINDLY SPONSORED BY: TBC**

[N.B. 1<sup>st</sup> and 2<sup>nd</sup> in this class to compete in Ring Championship (to include Pony Championship)]

**CLASS 10 IN-HAND OPEN HORSE - exceeding 153cm [15hh]**

Open to mares and geldings, any breed or type, any age.

**THIS CLASS IS KINDLY SPONSORED BY: PLAISH FARM LTD**

[N.B. 1<sup>st</sup> and 2<sup>nd</sup> in this class to compete in Ring Championship (to include Horse Championship)]

**CLASS 11 VETERAN IN-HAND – Mixed Age Horse or Pony 15 years old & over**

Open to any breed 15yrs and over – age to be clearly displayed

**THIS CLASS IS KINDLY SPONSORED BY: VECTIS EQUINE VETS**

[N.B. 1st and 2nd in this class to compete in Ring Championship to include Veteran Championship]

**CLASS 12 COLOURED HORSE OR PONY IN-HAND**

Open to either piebald or white and any other colour (skewbald), e.g. bay, roan, chestnut; with a patch of naturally occurring white coat. Any breed, any height. Exhibitor any age

A special rosette will be awarded to the highest placed yearling not in the first 3 prizes in this Class

The **H.J. BENNETT TROPHY** presented by H.J. Bennett Haulage Contractors will be awarded to the winner of this Class

**THIS CLASS IS KINDLY SPONSORED BY: MR & MRS NIGEL BENNETT**

[N.B. 1st and 2nd in this class to compete in Ring Championship to include Coloured Championship]

**LUNCH BREAK**

**CLASS 13 BROOD MARE WITH FOAL AT FOOT**

Open to Brood Mare any breed, type or size with foal at foot

The **HOLMES HOUSE CUP (MARE)** presented by Mr & Mrs Panek will be awarded to the winner of this Class

**THIS CLASS IS KINDLY SPONSORED BY: KINGSLEY HOLLIS COUNTRYSIDE SERVICES**

[N.B. 1st and 2nd in this class to compete in Ring Championship]

**CLASS 14 FOAL AT FOOT**

Foal of above Brood Mare (to be judged separately within the same class)

Foal to be at least 4 weeks old on day of show

The **HOLMES HOUSE CUP (FOAL)** presented by Mr & Mrs Panek will be awarded to the winner of this Class

**THIS CLASS IS KINDLY SPONSORED BY: TBC**

### **CLASS 15 VETERAN RIDDEN – Mixed Age Horse or Pony 15 years old & over**

Open to any breed 15yrs and over – age to be clearly displayed.

The **LADYBIRD SALVER** presented by The Hicks Family will be awarded to the winner of this Class

**THIS CLASS IS KINDLY SPONSORED BY: VECTIS EQUINE VETS**

[N.B. 1st and 2nd in this class to compete in Ring Championship to include Veteran Championship]

### **CLASS 16 COLOURED HORSE OR PONY RIDDEN**

Open to either piebald or white and any other colour (skewbald), e.g. bay, roan, chestnut; with a patch of naturally occurring white coat. 4yrs and over, any breed, any height. Exhibitor any age.

The **H.J. BENNETT PERPETUAL CHALLENGE CUP** presented by H.J. Bennett Haulage Contractors will be awarded to the winner of this Class

**THIS CLASS IS KINDLY SPONSORED BY: MR & MRS NIGEL BENNETT**

[N.B. 1st and 2nd in this class to compete in Ring Championship to include Coloured Championship]

### **CLASS 17 RIDDEN SHOW HUNTER PONY, SHOW PONY, PART-BRED M&M**

Open to mares and geldings, any breed, 4 years & over. **not exceeding 153cm [15hh]**

**THIS CLASS IS KINDLY SPONSORED BY: WE'VE GOT CRABS**

[N.B. 1<sup>st</sup> and 2<sup>nd</sup> in this class to compete in Ring Championship (to include Pony Championship)]

### **CLASS 18 RIDDEN OPEN HORSE - exceeding 153cm [15hh]**

Open to mares and geldings, any breed or type, 4 years & over.

**THIS CLASS IS KINDLY SPONSORED BY: DANIELLE MILLMORE EQUINE PODIATRIST**

[N.B. 1<sup>st</sup> and 2<sup>nd</sup> in this class to compete in Ring Championship (to include Horse Championship)]

#### **RING ONE B CHAMPIONSHIP**

1<sup>st</sup> & 2<sup>nd</sup> prize winners from classes 9 to 18 (not including Class 14)

The **WINTER VENTURE CUP** will be presented to the Overall Winner of this Championship

The **J.W. WOOLDRIDGE PERPETUAL CHALLENGE CUP** will be awarded to the winner of the Pony Championship

1<sup>st</sup> & 2<sup>nd</sup> prize winners from Classes 9 & 17 to come forward for this Championship

The **Mrs S C Day Perpetual Challenge Cup** will be awarded to the winner of the Horse Championship

1<sup>st</sup> & 2<sup>nd</sup> prize winners from classes 10 & 18 to come forward for this Championship

The **LETS PLAY MONOPOLY CUP** presented by **Katy Kellaway** will be awarded to the winner of the Veteran Championship

1<sup>st</sup> & 2<sup>nd</sup> prize winners from classes 11 & 15 to come forward for this Championship

The **GULARRENS WHITE WARRIOR MEMORIAL SHIELD** presented by H.J. Bennett Haulage Contractors will be awarded to the winner of the Coloured Championship

1<sup>st</sup> & 2<sup>nd</sup> prize winners from classes 12 & 16 to come forward for this Championship

**THIS CHAMPIONSHIP IS KINDLY SPONSORED BY: BARNSTORE**

### **“SUPREME OF THE SHOW” CHAMPIONSHIP**

“SUPREME OF THE SHOW” CHAMPION £250, RESERVE CHAMPION £150

**The following are invited to come forward for this Championship**

**ALL** Champions and Reserves from Ring One A: M & M Ridden, In-Hand, Overall M&M and Mini Championships

**ALL** Champions and Reserves from Ring One B Championships: Overall, Veteran, Coloured, Pony and Horse Championships

**THIS CHAMPIONSHIP IS KINDLY SPONSORED BY: THE CASTLE INN**

# **Saturday 12<sup>th</sup> July 2025**

## **RING TWO (Lower Ring)**

### **ARENA EVENTING**

Please see separate attached Schedule

# **Sunday 13<sup>th</sup> July 2025**

## **SPENCE WILLARD RING**

### **RING ONE (Middle Ring)**

### **INTER TEAM RELAY (HEATS)**

Please see separate attached Schedule

### **PONY CLUB GAMES**

### **INTER TEAM RELAY (FINALS)**

### **CARRIAGE DRIVING**

Please see separate attached Schedule

## **RING TWO (Lower Ring)**

### **SHOW JUMPING**

Please see separate attached Schedule



**RUNNING ORDER**  
**SATURDAY**  
**SPENCE WILLARD - RING ONE (A) (Middle Ring)**

Judge – Mrs D. Barr

10am Class 1 Open Leading Rein  
Class 2 Open First Ridden

**Mini Championship [Classes 1 & 2]**

Class 3 M&M Small Breeds Youngstock  
Class 4 M&M Large Breeds Youngstock  
Class 5 M&M Small Breeds In Hand  
Class 6 M&M Large Breeds In Hand

**Mountain & Moorland In-Hand Championship [Classes 3-6]**

LUNCH BREAK

Class 7 Mountain & Moorland Ridden – Small Breeds  
Class 8 Mountain & Moorland Ridden – Large Breeds

**Mountain & Moorland Ridden Championship [Classes 7 & 8]**

**Welsh Perpetual Challenge Cup [Highest Placed Section Ds from Classes 4, 6 & 8]**

**VECTIS STUD MOUNTAIN & MOORLAND OVERALL CHAMPIONSHIP  
M&M In-Hand Champion & Reserve & M&M Ridden Champion & Reserve**

**SPENCE WILLARD - RING ONE (B) (Middle Ring)**

Judge – Miss J. Ryde-Rogers

10am Class 9 In-Hand Show Hunter Pony, Show Pony, Part-Bred M&M any age, n/e 153cm [15hh]  
Class 10 In-Hand Open Horse any age, exceeding 153cm [15hh]  
Class 11 Veteran In-Hand  
Class 12 Coloured In-Hand

LUNCH BREAK

Class 13 Mare with Foal at Foot  
Class 14 Foal of above Mare  
Class 15 Veteran Ridden  
Class 16 Coloured Ridden  
Class 17 Ridden Show Hunter Pony, Show Pony, Part-Bred M&M not exceeding 153cm [15hh]  
Class 18 Ridden Open Horse exceeding 153cm [15hh]

**Ring One B Championship [Classes 9 to 18 excluding Class 14]  
To include the following Championships: Pony, Horse, Veteran & Coloured**

**“SUPREME OF THE SHOW” CHAMPIONSHIP**

**ALL Champions and Reserves from the **Showing Classes** are invited to come forward for this  
Championship**

**RING TWO (Lower Ring)**

10am - 5pm

Arena Eventing

Classes 19 to 22

**SUNDAY**  
**SPENCE WILLARD - RING ONE (Middle Ring)**

|                   |                          |                  |
|-------------------|--------------------------|------------------|
| 10am – 12noon     | Inter Team Relay (Heats) | Class 32         |
| 12noon to 12:45pm | Pony Club Games          |                  |
| 1pm – 2pm         | Inter Team Relay (Final) |                  |
| 2pm –3:30pm       | Carriage Driving         | Classes 33 to 35 |

**RING TWO (Lower Ring)**

|            |              |                  |
|------------|--------------|------------------|
| 10am - 4pm | Show Jumping | Classes 23 to 31 |
|------------|--------------|------------------|

# Arena Eventing Schedule

## Saturday 12<sup>th</sup> July 2025

### RING TWO (Lower Ring)

#### Qualifiers for;

Eland Lodge National Arena Eventing Championship qualifier

NPS

Sunshine Tour

Start Time 10am

#### Class

CLASS 19. 60cm

#### Section

Junior/Senior

**THIS CLASS IS KINDLY SPONSORED BY: BLUE GIRAFFE SERVICES**

CLASS 20. 70cm

Junior/Senior

**THIS CLASS IS KINDLY SPONSORED BY: BODYWORKS BY MELISSA - HUMAN AND ANIMAL CHIROPRACTOR**

CLASS 21. 80cm

Junior/Senior

**THIS CLASS IS KINDLY SPONSORED BY: W&H WESTERN**

CLASS 22. 90cm

Junior/Senior

**THIS CLASS IS KINDLY SPONSORED BY: W&H WESTERN**

**Eland Lodge qualifiers** – those placed in the top 3 will receive a qualifying card and rosette from Eland Lodge.

**Sunshine Tour qualifiers** – qualification is gained by being placed 1<sup>st</sup> – 4<sup>th</sup> in eventers challenge classes. Qualification does not pass down the line.

**NPS qualifiers** – qualification will be gained by achieving a top 10 placing or double clear in a qualifying class. Qualification will be confirmed by the NPS Office, and displayed on qualified ponies. Riders may only ride one pony in each class at the final. Qualifying rounds are open to competitors from the UK and elsewhere. The owner of the pony must be a qualifying, life or performance member of the NPS for 2025 in order to qualify and compete in the final. The final is open to mares, geldings, and stallions four years old and over, in possession of an equine passport but no specific registration or breed society criteria. Ponies' manes may be plaited at competitor discretion. Any qualification gained in the 60/70cm or 80/90cm will jump the higher limit in the final.

This event will be run under British Riding Club rules.

# Inter Team Relay Schedule

## Sunday 13<sup>th</sup> July 2025

SPENCE WILLARD - RING ONE (Middle Ring)

**PLEASE NOTE:** Entries for Arena Eventing will NOT be available in Horse Monkey.

For all entries please contact Kirsty: [isleofwight@pcuk.org](mailto:isleofwight@pcuk.org)

### CLASS 32

Teams of four from each club to enter, every member must be competent jumping 70cm at speed and confident in a race environment. There will be a mirrored course set up (so two teams can compete at the same time) of mainly working hunter style jumps, of approximately 70cm and to include one or more non jumping tasks.

You will be provided with a baton and all members must be dressed correctly showjumping or eventing as they would represent their club. This is a timed competition, and the starting order will be drawn.

The competition will be run as a knock-out relay and the time taken from the start of the first rider to the finish of the final competitor. 5 seconds will be added to the time for a knockdown. If the baton is dropped the competitor must dismount, pick it up, re-mount and continue. (You may be assisted)

If a competitor is eliminated for three or more refusals another competitor must complete their round for them. In the event of a fall by rider, the time will keep ticking but penalties won't be added. At the discretion of the judge/medical team, the rider may continue once remounted. Another rider can continue the course in their place once the rider is up and on their feet, when it's deemed safe to do so by the judge. In the event of a horse fall, the team will be automatically eliminated.

Start Time – Heats 10am to 12 noon  
Semi Finals & Final 1pm to 2pm

***THE INTER TEAM RELAY IS KINDLY SPONSORED BY: Lower Dolcoppice Farm Holidays***

# **ISLE OF WIGHT CARRIAGE DRIVING SHOW SCHEDULE**

**Sunday 13th July 2025**

**All competitors must be BDS MEMBERS**

**PLEASE NOTE: Entries for Carriage Driving will NOT be available in Horse Monkey.**

For all entries please contact: Sam Searle [ssearle1@tiscali.co.uk](mailto:ssearle1@tiscali.co.uk)

## **GENERAL CONDITIONS**

1. General Rule for Young Drivers: The driver must be aged 8 years or over on the first day of the show at which they are to compete. A driver under the age of 18 must be accompanied in the vehicle by a competent and responsible person aged 18 years or over, a "responsible adult". Proof of age will be required if necessary. Young drivers that are using double reins must at all times have a third person in the carriage to act as a groom. In the event of an incident the responsible adult must remain in the carriage and not get down from the carriage whilst holding the reins.
2. All drivers/grooms/passengers under the age of 14 years must wear a correctly fitted hard hat that meets the current standards when in a carriage or in attendance to a turnout.
3. When in the vehicle grooms, passenger/s and driver must have their feet firmly on the floor of the vehicle or use a suitable fixed footrest. This regulation applies at all times and in all areas on the showground.
4. BDS safety rules must be adhered to at all times.

**(to start at approx 2.00.p.m in Ring One (Middle Ring))**

### **CLASS 33 EXERCISE CLASS: TWO AND FOUR WHEEL**

**Judge – Modris Kesans**

Open to horses, ponies, donkeys & mules. An exercise vehicle is a carriage not of traditional type design and includes those with pneumatic tyres specifically designed for carriages (not car tyres). Lamps need not be carried if lamp brackets are not fitted. Judging will include general cleanliness, safety of turnout, correct fitting of harness and vehicle suitability. Please note this is a show class and the standards of BDS Show classes are to be respected (clean, tidy and safe animals, harness, vehicle, whip and groom)

### **CLASS 34 PLEASURE DRIVING**

**Judge – Modris Kesans**

Pleasure driving classes are for newcomers to showing and not intended for those who show in private driving classes. Regular showing competitors are asked to respect this. Pneumatic tyres specially designed for carriages (not car tyres) are allowed. Lamps need not be carried.

To be judged: 15% vehicle suitability, fit and cleanliness; 15% harness suitability, fit and cleanliness; 70% driver & groom, horse/pony, way of going and suitability as a family pleasure animal. Competitors may, for example be required to drive and halt between two pairs of cones and/or given other specific movements to execute in their show.

Open to horses, ponies, donkeys & mules. A single or pair driven to a vehicle capable of seating 2 or more persons. Traditional and non-traditional vehicles are permitted and for the purposes of this class, they will be judged on equal merit.

### **CLASS 35 PRIVATE DRIVING CLASS**

**Judge – Modris Kesans**

Unless specified, open to single, pair, tandem and multiples. Hackney or Non-Hackney Type. The best equine irrespective of size, correctly and smartly harnessed to a sound, suitable and well-maintained traditional type vehicle, suitable for a competent whip to drive in company. Lamps and spares must be carried.

## **CHAMPIONSHIP - BDS ISLE OF WIGHT**

### **Including YOUNG DRIVER AWARD**

1<sup>st</sup> & 2<sup>nd</sup> prize winners from classes 33 to 35

**ROSETTES FOR THIS CHAMPIONSHIP ARE KINDLY PROVIDED BY BDS**

# Show Jumping Schedule

## Sunday 13<sup>th</sup> July 2025

Entries Close Monday 30<sup>th</sup> June

All classes are open to horses and ponies. Riders any age

Start time 10am. Times will be shared Monday 7<sup>th</sup> July

**Class 23** Show Jumping (0.30m)

**Table/Speed:** Single Phase

**Entry Fee:** £15.00

**THIS CLASS IS KINDLY SPONSORED BY:** *WATERTIGHT PUMBING SOLUTIONS*

**Class 24** Show Jumping (0.40m)

**Table/Speed:** Single Phase

**Entry Fee:** £15.00

**THIS CLASS IS KINDLY SPONSORED BY:** *TBC*

**Class 25** Show Jumping (0.50m)

**Table/Speed:** Single Phase

**Entry Fee:** £15.00

**THIS CLASS IS KINDLY SPONSORED BY:** *TBC*

**Class 26** Show Jumping (0.60m)

**Table/Speed:** Single Phase

**Entry Fee:** £15.00

**THIS CLASS IS KINDLY SPONSORED BY:** *BLUE GIRAFFE SERVICES*

**Class 27** Show Jumping (0.70m)

**Table/Speed:** Single Phase

**Entry Fee:** £15.00

**THIS CLASS IS KINDLY SPONSORED BY:** *TBC*

**Class 28** Show Jumping (0.80m)

**Table/Speed:** Single Phase

**Entry Fee:** £15.00

**THIS CLASS IS KINDLY SPONSORED BY:** *VISION WINDOWS*

**Class 29** Show Jumping (0.90m)

**Table/Speed:** Single Phase

**Entry Fee:** £15.00

**THIS CLASS IS KINDLY SPONSORED BY:** *TBC*

**Class 30** Show Jumping (1.00m)

**Table/Speed:** Single Phase

**Entry Fee:** £15.00

**THIS CLASS IS KINDLY SPONSORED BY:** *TBC*

**Class 31** Show Jumping (1.10m)

**Table/Speed:** Single Phase

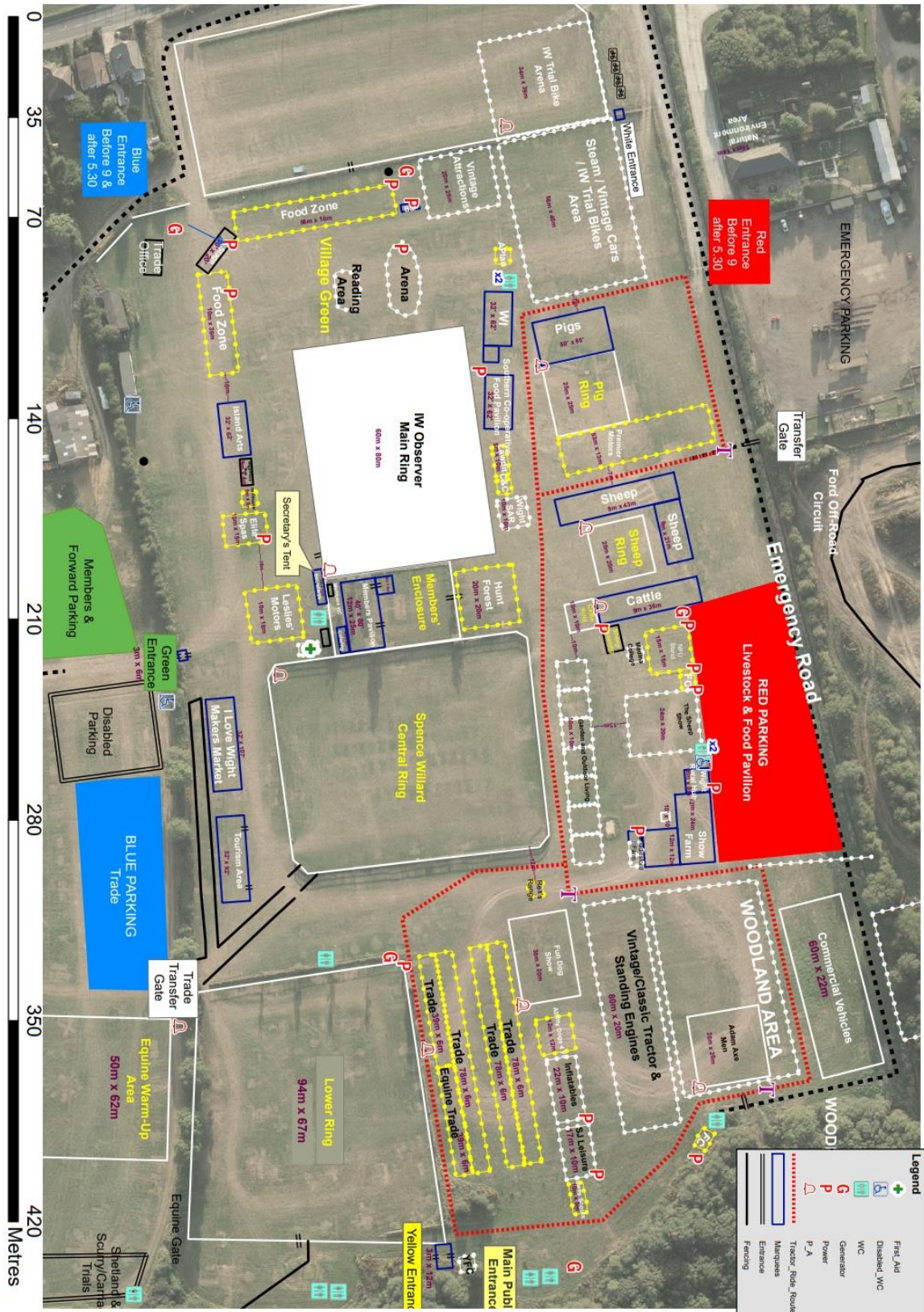
**Entry Fee:** £15.00

**THIS CLASS IS KINDLY SPONSORED BY:** *TBC*

This show is a qualifier for The Sunshine Tour Championships held at The All England Showground, Hickstead, Show Jumping from Lead Rein to 1.05

Qualification: Show Jumping 1st – 3rd place.

# ROYAL ISLE OF WIGHT COUNTY SHOW 2025



**Please note:**

- No-one will be allowed entry without a wristband (including exhibitors).
- All wristbands will be checked on the gates.
- Abuse of staff or volunteers will not be tolerated.

Thank you for your co-operation.